

Model NO. : SSL-25

Titan series Solar Street Lights 5000Lumens

Intelligence/Efficiency/Energy Saving

Application: High way/Park/Street/Roadway/Parking

Lot/Public square/ plaza/Campus/Airfield/Farm &

Ranch/Remote Area/Military Base/Government

project for special use

Categories: [Solar Street Light](#)



Features:  
1.ALS(Adaptive Lighting System) to achieve all night lighting when Weather change. Constant current output!  
2.VFT(Variable Frequency Technology) to Control and adjust the LED driver frequency to reach the max output of LED and Battery  
3.TCS ( Temperature Control System) to Protect the battery charging and discharging in high temperate  
4.Big solar panel and high brightness All-in-one design, no need separated mount for solar panel and light.  
5.The adjustable solar panel and LED Panel to increase the charging efficiency and lighting area  
6. Customized high quality PIR which can reach motion distance over 15M  
7. More professional 2 times lighting distribution for road lighting, wide lighting angle reach 140°  
8.South Korea imported LED Chip SSC,160 lumen/W  
9.Remote control to setting the different lighting mode.

LED	5000 lumens SSC LED Chip 3030 5500-6500K
-----	---

Li-ion battery	769.6WH 18.5V
----------------	---------------

Solar Panel	23V 98.3W
-------------	-----------

Install height	6M
----------------	----

Waterproof	IP65
------------	------

Solar charging time	10-11 hours by bright sunlight
---------------------	--------------------------------

Lighting time	
---------------	--

Material	Aluminium alloy+PC
----------	--------------------

Size	1687*810*385mm
------	----------------

Warranty	3 years
----------	---------

price per unit	50 pcs Price			
us\$1415.00 BUY NOW	us\$1396.45 BUY NOW			

Lighting mode
---------------

Main Lighting mode as below  
1. Constant Brightness without motion sensor.  
2. Dim lighting + Motion sensor  
3. Summer and Winter Mode Option for energy saving

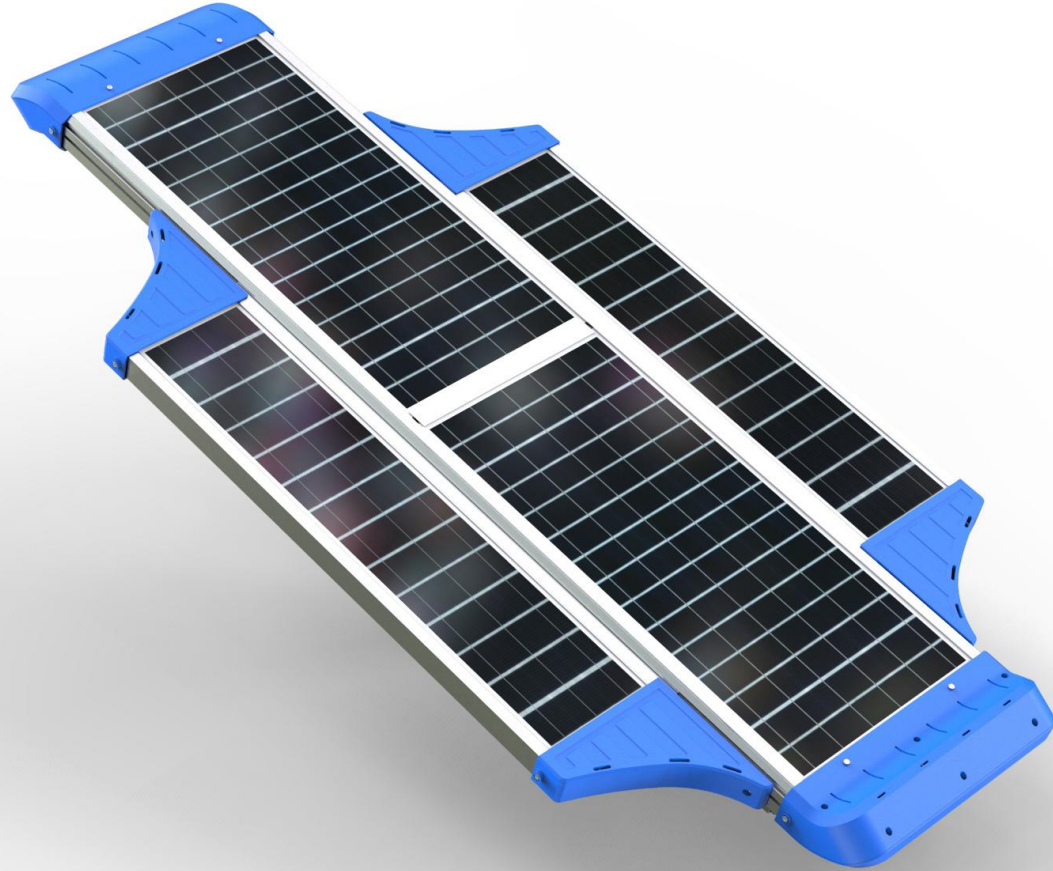
Application:  
High way/Park/Street/Roadway/Parking Lot/Public square/ plaza/Campus/Airfield/Farm & Ranch/Remote Area/Military Base/Government project for special use

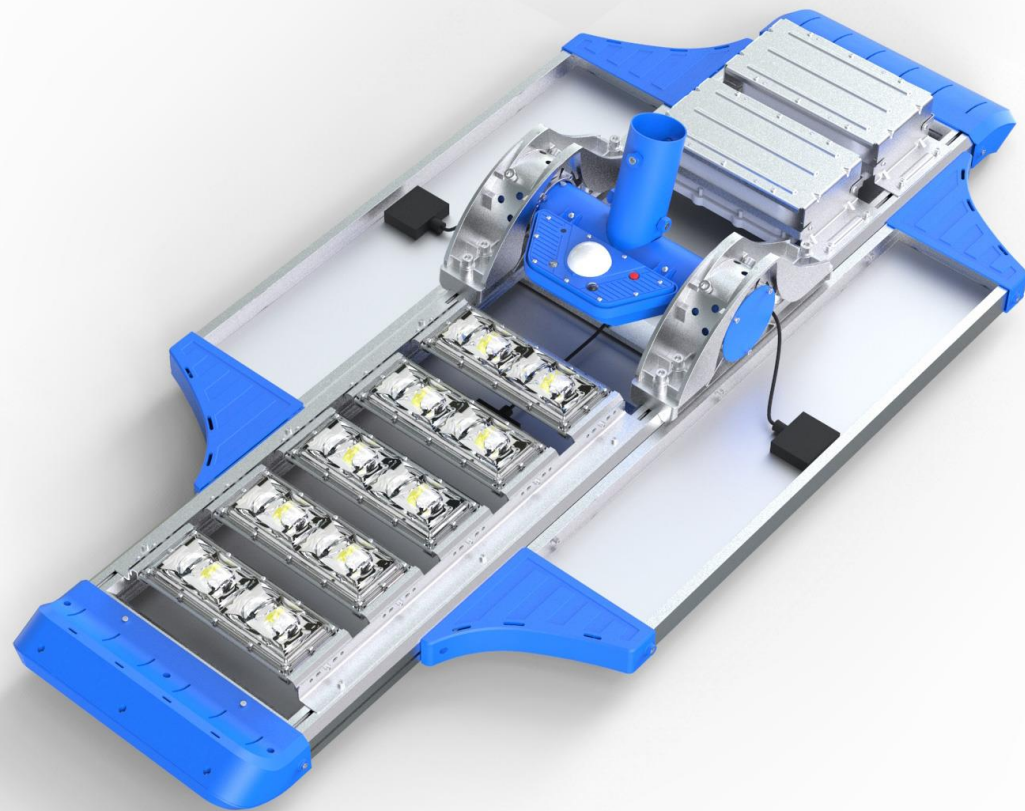
Retail packaging:  
Carton size: 160\*50\*24.5CM  
QTY/CTNS: 1PCS  
G.W/CTNS:











## •PRODUCTS DETAIL

•

Main Features:

1.LED: South Korea imported LED Chip SSC,160 lumen/W

2.Battery : A graded Li-ion battery No.18650

3.Design: Big solar panel, Battery, LED panel are all in One Integrated Design

4.Solar panel: High efficiency Glass Lamination panel

5.PIR :Motion sensor distance over 15M

6.Remote controller : Adjust brightness ,lighting time and lighting mode

7.Special function: The Solar panel install angle is adjustable from  $-15^{\circ}$  to  $30^{\circ}$ , and LED panels also adjust from  $-15^{\circ}$  to  $30^{\circ}$  . In order to reach the best sunlight power and get the best lighting power.

8.Technology: three core Intelligence technology to improve brightness 30% and save power 50%



## Working process instructions

