

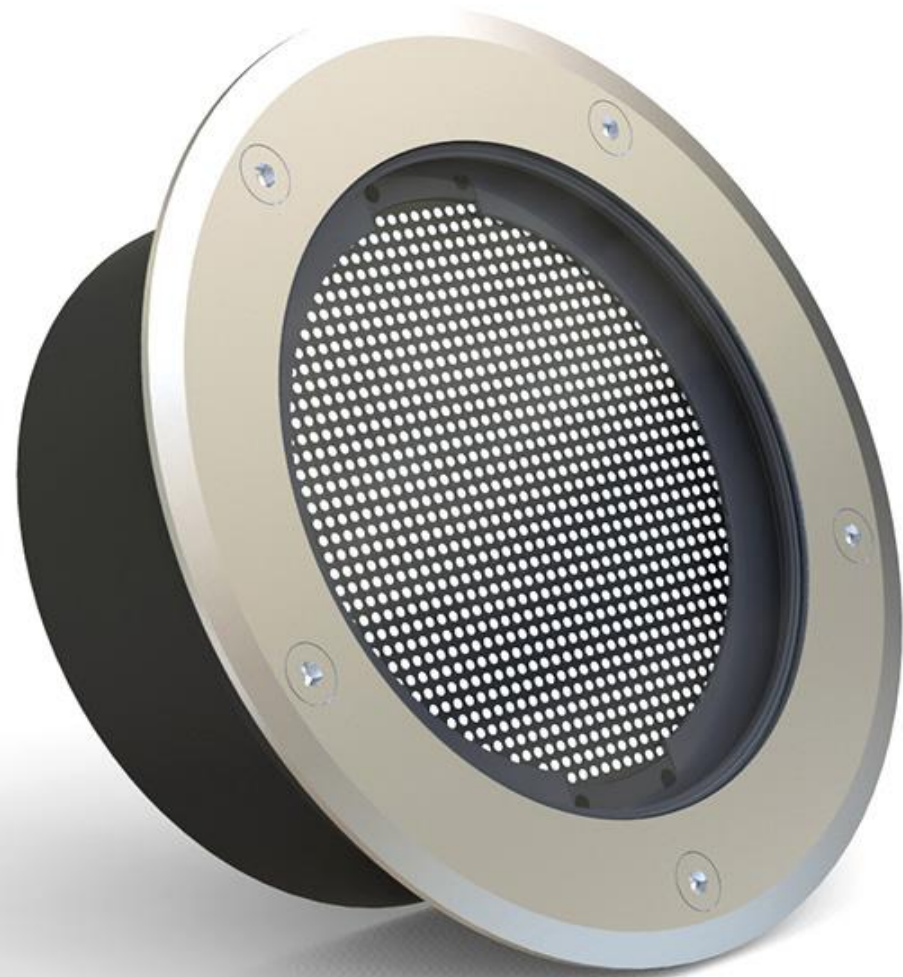
Model NO. : SLL-05

SOLAR Underground Light

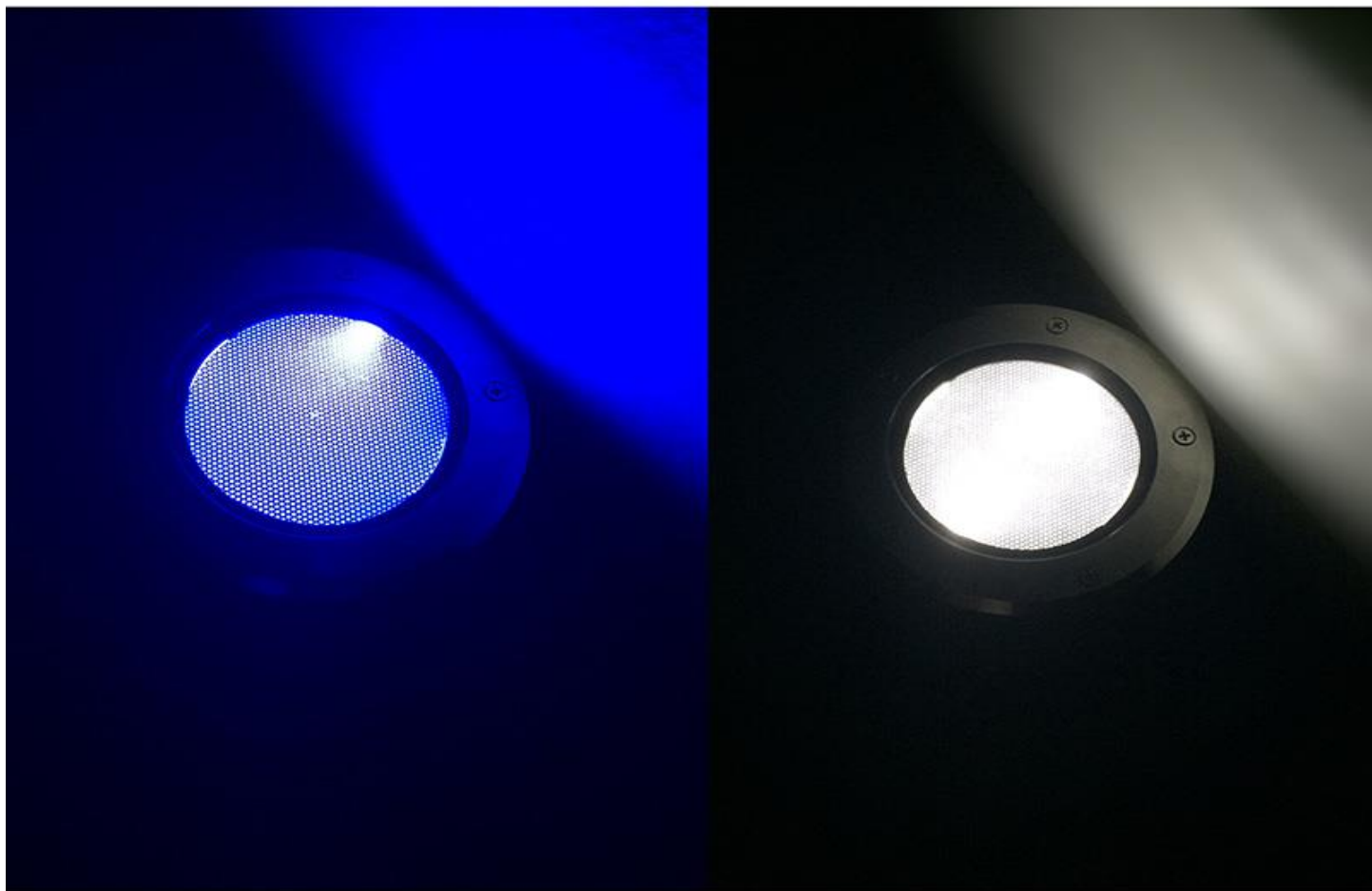
High quality/Efficiency/Energy Saving

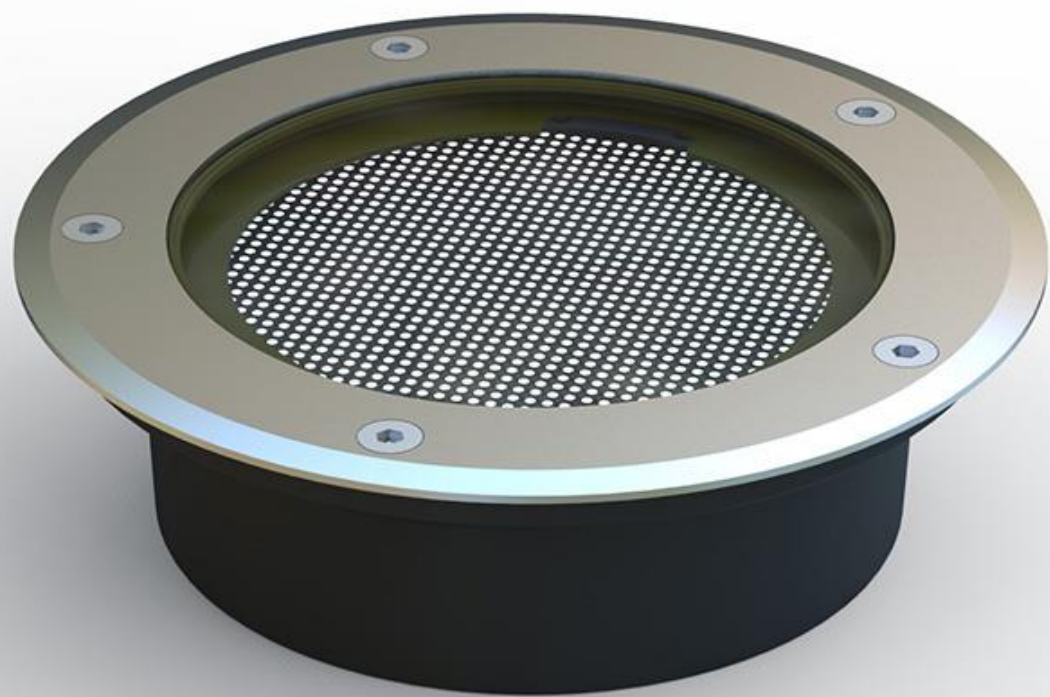
Application: Courtyard/Garden/ garage door/
warehouse/stable/gateway/escape trunk/corridor etc.

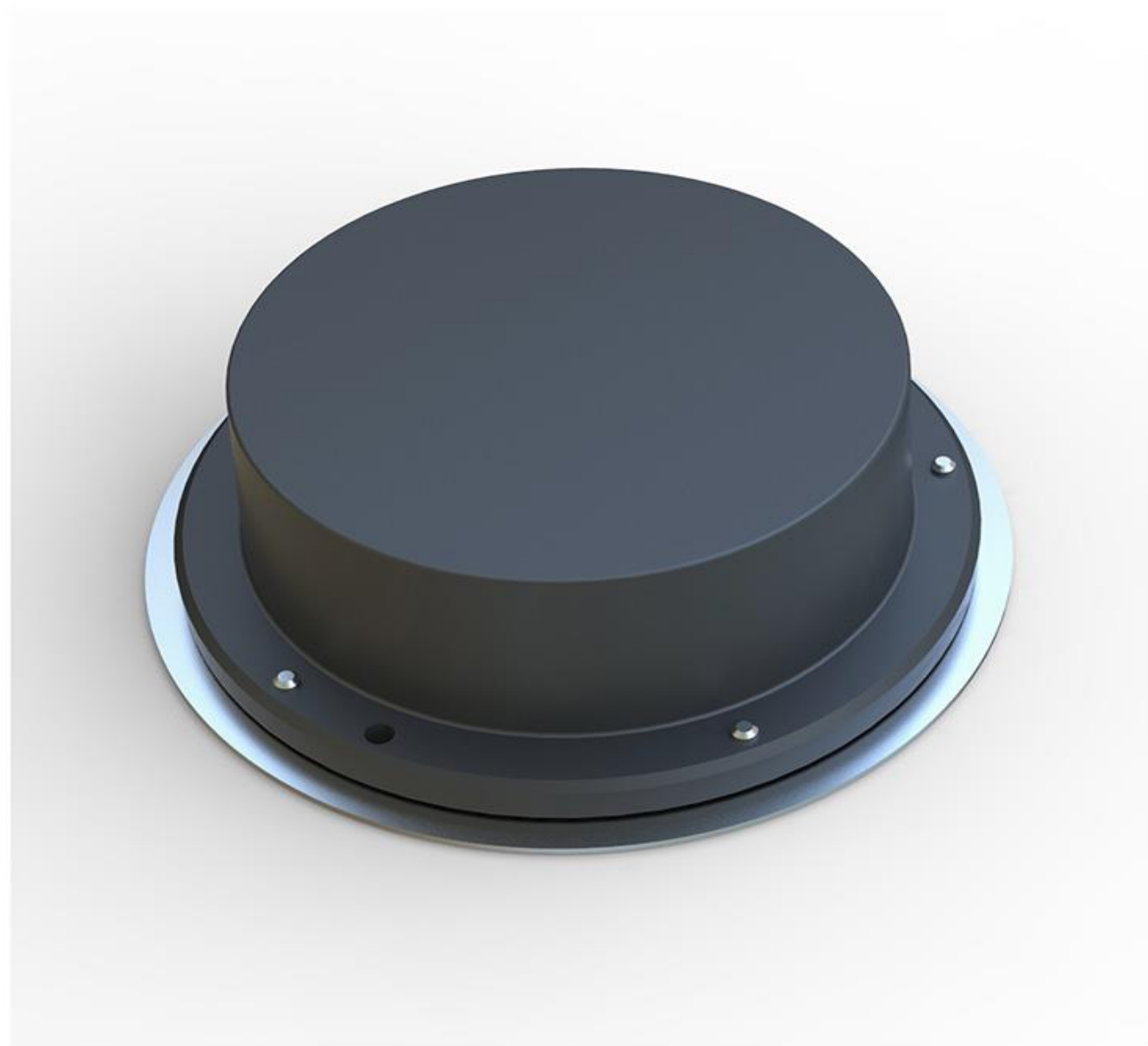
Categories: [Solar Underground Light](#)



Features: Built-in full screen solar panel with high charging efficiency Soft full screen bright light, no dazzling point lighting Strong pressure-resistant stainless housing with firm glass 5 nights Super long lighting time		price per unit	500 pcs Price			
		us\$29.15 BUY NOW	us\$21.6 BUY NOW			
LED	20Lumens, 6000K±500K	Lighting Mode				
Li-ion battery	600mAh,3.7V	Full brihtness whole night				
Solar Panel	0.55W,5.5V					
Surface Load Capacity	1000 kg	Application: Plaza, Park, Garden, Street, Walkway, Bank of swimming pool etc.				
Waterproof	IP 68					
Solar charging time	6~7 hours in bright sunlight					
Lighting time	5 nights	Packing details: Retail packaging: L13.2*W13.2*H7CM Carton size: L41*W27.5*H23CM QTY/CTNS: 18PCS G.W/CTNS: 11.2KG				
Material	Stainless steel+ Glass					
Size	Φ128*58mm					
Warranty	1 year					









- **PRODUCTS DETAIL**

-

Main Features:

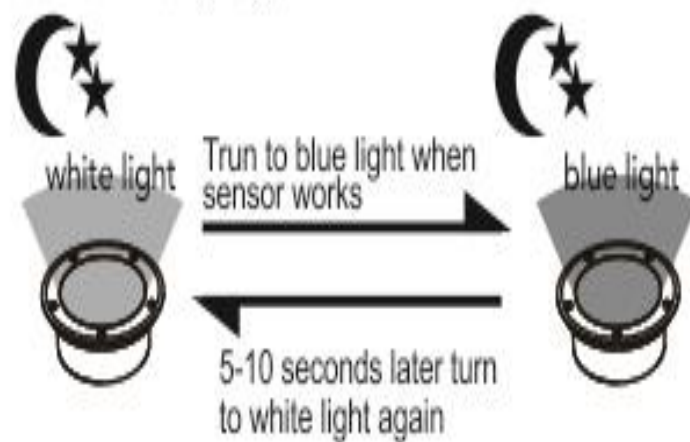
- 1.Solar panel: High efficiency monocrystalline silicon
- 2.LED : High quality
- 3.Battery : A graded Li-ion battery No.18650
- 4.Waterproof: IP65
- 5.Material : Aluminum Alloy + Tempered Glass

How's the light working?

Light switch off for sun charging in daytime.



At night, it turns on white light automatically, during the first 5 hours, if people stride over the lamp(0-50cm distance) the lamp will turn to blue light, and last 5-10 seconds, after that become white light again.



After 5 hours, it will be 50% brightness white light for another 5 hours, and then turn off. Pls note, no blue light during this 5 hours.

