

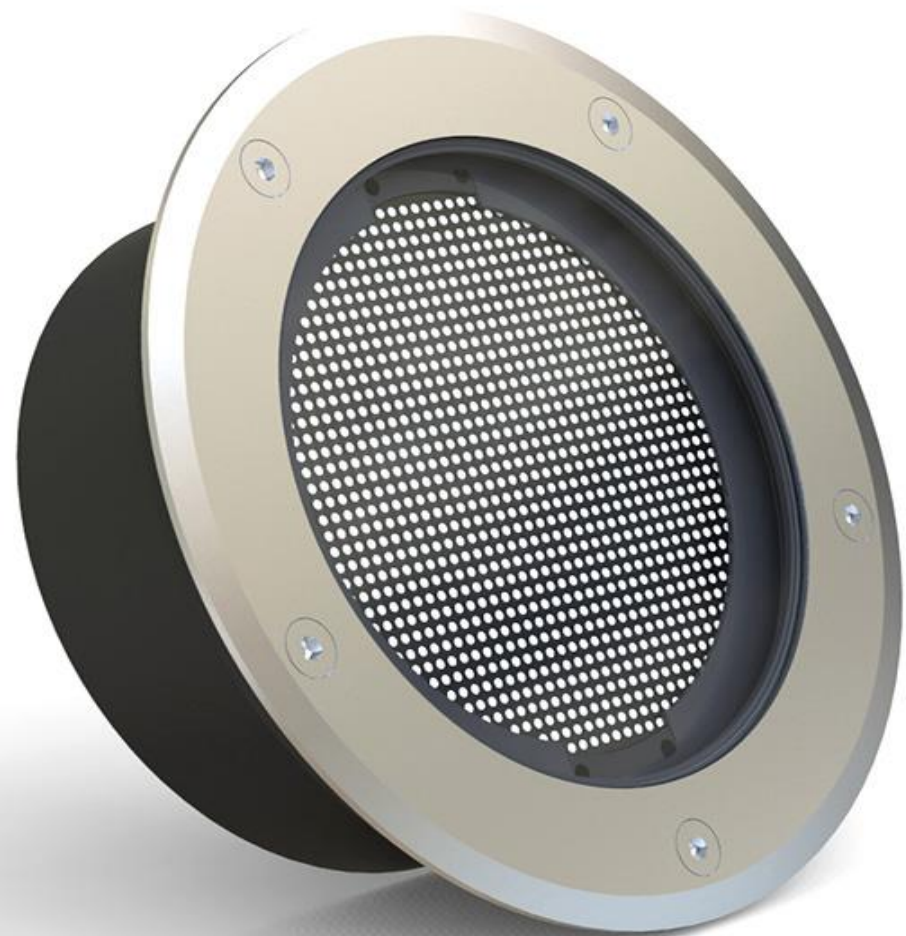
Model NO. : SLL-15

SOLAR Underground Light

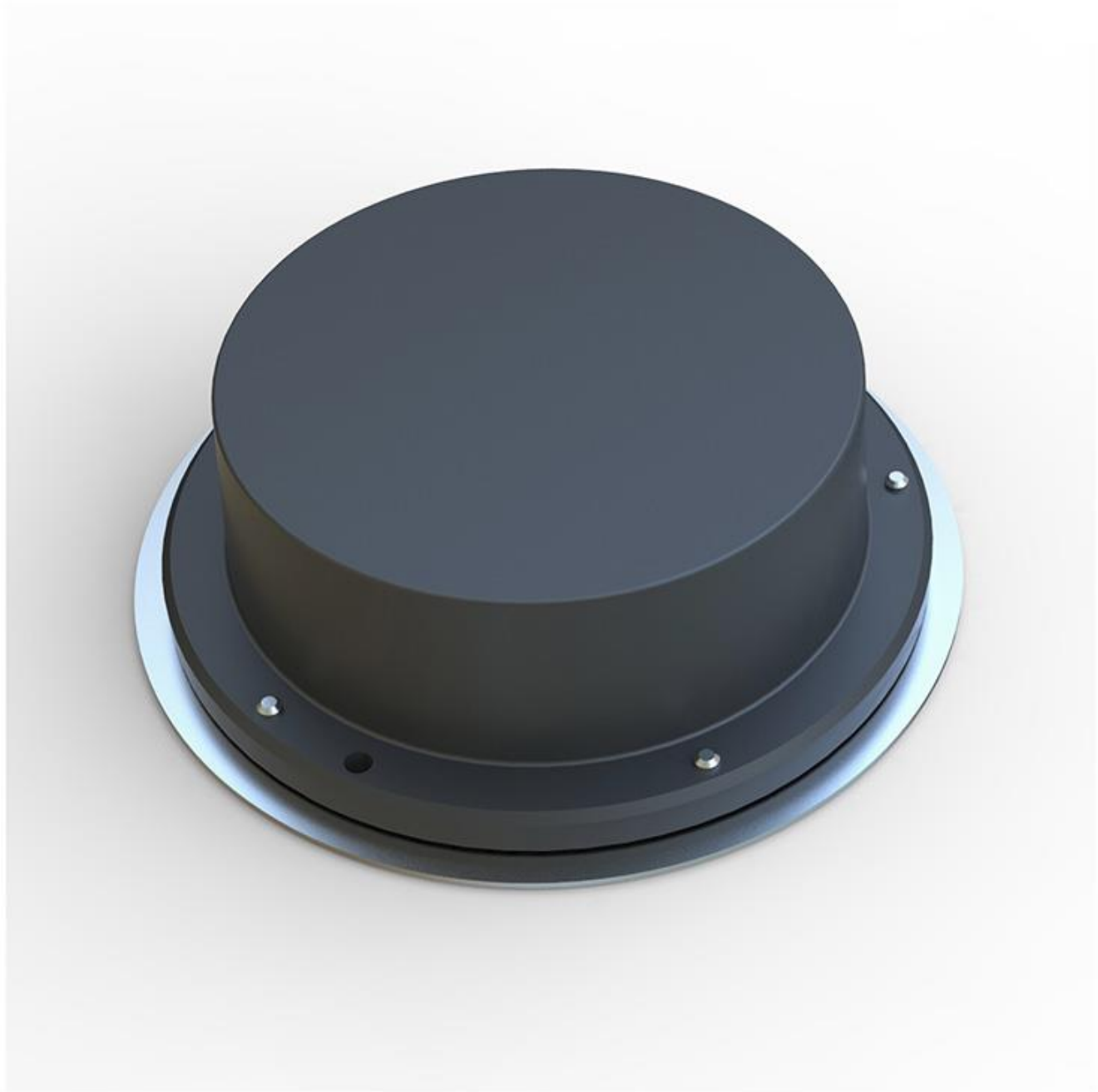
High quality/Efficiency/Energy Saving

Application: Courtyard/Garden/ garage door/
warehouse/stable/gateway/escape trunk/corridor etc.

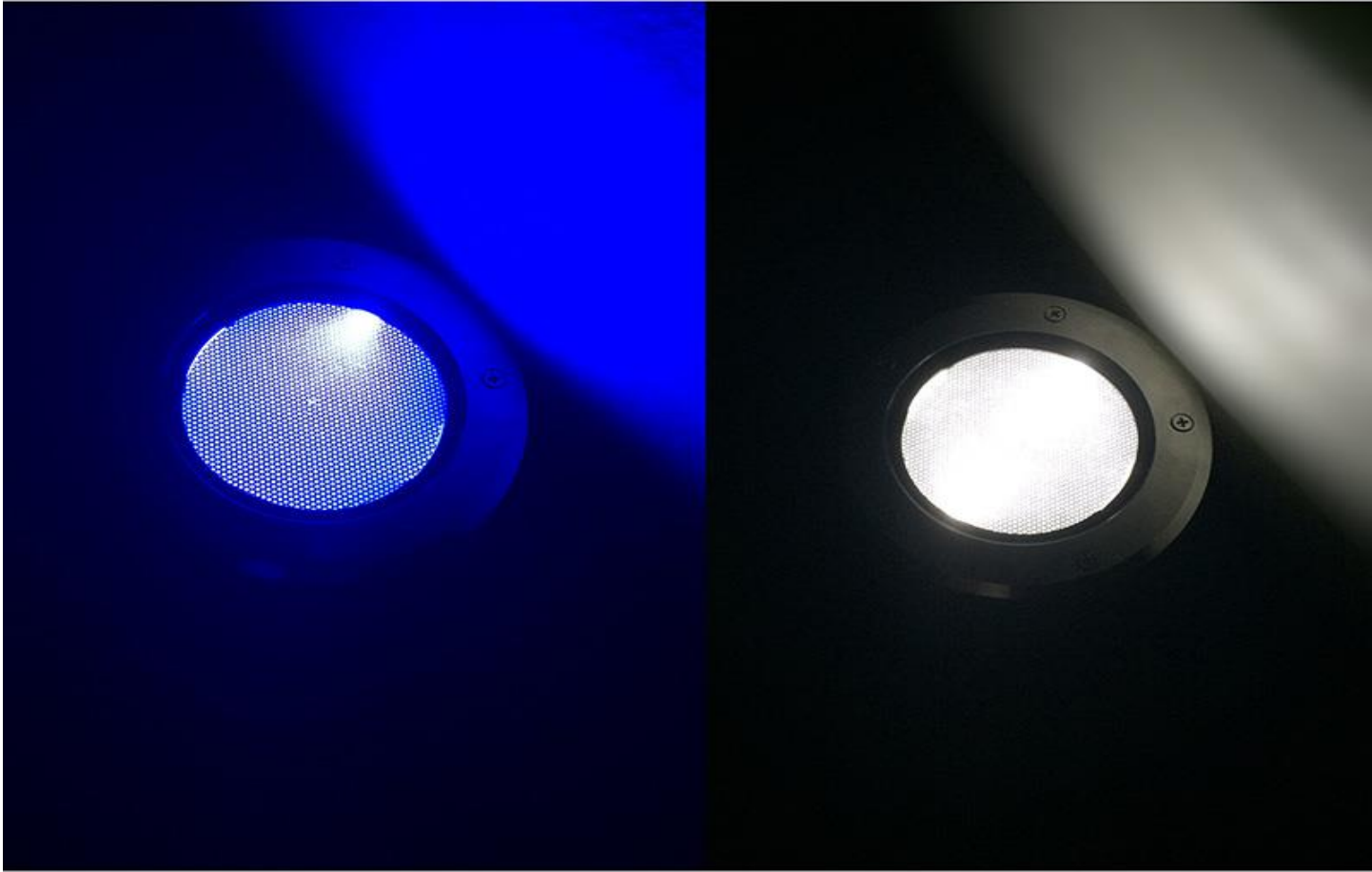
Categories: [Solar Underground Light](#)



Features: Interaction function to make the light between white color and blue color IP68 Waterproof 4 days lighting time after the battery is full charged		price per unit	500 pcs Price			
		us\$45.13 BUY NOW	us\$33.12 BUY NOW			
LED	30Lumens, 6000K ± 500K	Lighting mode				
Li-ion battery	2000mAh, 3.7V	First 5 hours white color light, when something pass by above the lamp (distance 0~50CM), it will turn to blue color for 10 second. After the first 5 hours, the interaction function will turn off automatically, the lamp keep white color in 50% DIM light. After 10 hours lighting, the lamp will be off automatically				
Solar Panel	1W, 5.5V					
Surface Load Capacity	1000 kg	Application: Plaza, Park, Garden, Street, Walkway etc.				
Waterproof	IP 68					
Solar charging time	11 hours in bright sunlight					
Lighting time						
Material	Stainless steel+ Aluminum	Packing details: Retail packaging: L18*W6.5H*18cm Carton size: L37.5*W35.7*H27.5CM QTY/CTNS: 16PCS G.W/CTNS: 19KG				
Size	Φ170*55mm					
Interaction distance	0~50CM					
Warranty	1 year					







- **PRODUCTS DETAIL**

-

Main Features:

- 1.Solar panel: High efficiency monocrystalline silicon
- 2.LED : High quality
- 3.Battery : A graded Li-ion battery No.18650
- 4.Waterproof: IP65
- 5.Material : Aluminum Alloy + Tempered Glass

How's the light working?

Light switch off for sun charging in daytime.



At night, it will turn on automatically and last 10 hours, then turn off.

