

Model NO. : SSL-30

Big power Solar Street Lights 3000Lumens

High quality/Efficiency/Energy Saving

Application: High way/Park/Street/Roadway/Parking

Lot/Public square/ plaza/Campus/Airfield/Farm &

Ranch/Remote Area/Military Base/Government

project for special use

Categories: [Solar Street Light](#)

[www.usaemergencysolarenergy.com](http://www.usaemergencysolarenergy.com) PH+1-303-634-2208

Fax: +1-303-634-2208 Email: [sales@usaemergencysolarenergy.com](mailto:sales@usaemergencysolarenergy.com)



[www.usaemergencysolarenergy.com](http://www.usaemergencysolarenergy.com)  
PH:+1-303-634-2208  
Fax: +1-303-634-2208 Email:  
[sales@usaemergencysolarenergy.com](mailto:sales@usaemergencysolarenergy.com)

**Features:**  
**Elegant Integrated Design, Aluminum alloy case**  
**Super-bright LEDs, 3000Lumens**  
**Every element can be easily replaced by users**  
**Over 140° wide lighting angle**  
**Support 3 nights lighting time**  
**Easy to install**

price per unit	100 pcs Price			
<b>us\$943.32</b> <b>BUY NOW</b>	<b>us\$825.00</b> <b>BUY NOW</b>			

<b>LED</b>	<b>3000Lumens,6000K±500K</b>
------------	------------------------------

**Lighting Mode**

Li-ion battery	346.32WH,22.2V
----------------	----------------

**5Hrs 100% light+ 25% light till dawn**

Solar Panel	47W, 30V
-------------	----------

Install height	4~6 meters
----------------	------------

**Application:**  
**Courtyard/Garden/ Park/Street/Roadway/pathway/Parking Lot/Private road/Sidewalk/Public square/ plaza/Campus/Airfield/Farm & Ranch/Perimeter Security/ Wildlife area/Remote Area/Military Base/High way/Government project for special use**

Waterproof	IP 65
------------	-------

Solar charging time	10 hours by bright sunlight
---------------------	-----------------------------

<b>Lighting time</b>	<b>Over 3 nights</b>
----------------------	----------------------

Material	Aluminium alloy + steel glass
----------	-------------------------------

**Packing details:**  
**Carton size: L115\*W25\*H57 CM**  
**QTY/CTNS: 1PC**  
**G.W/CTNS: 28KG**

Size	488*1091*116.5mm
------	------------------

[www.usaemergency solarenergy.com](http://www.usaemergency solarenergy.com) PH+1-303-634-2208  
 Fax: +1-303-634-2208 Email: [sales@usaemergency solarenergy.com](mailto:sales@usaemergency solarenergy.com)

Warranty	3 years
----------	---------

[www.usaemergencysolarenergy.com](http://www.usaemergencysolarenergy.com)  
PH+1-303-634-2208  
Fax: +1-303-634-2208 Email:  
[sales@usaemergencysolarenergy.com](mailto:sales@usaemergencysolarenergy.com)



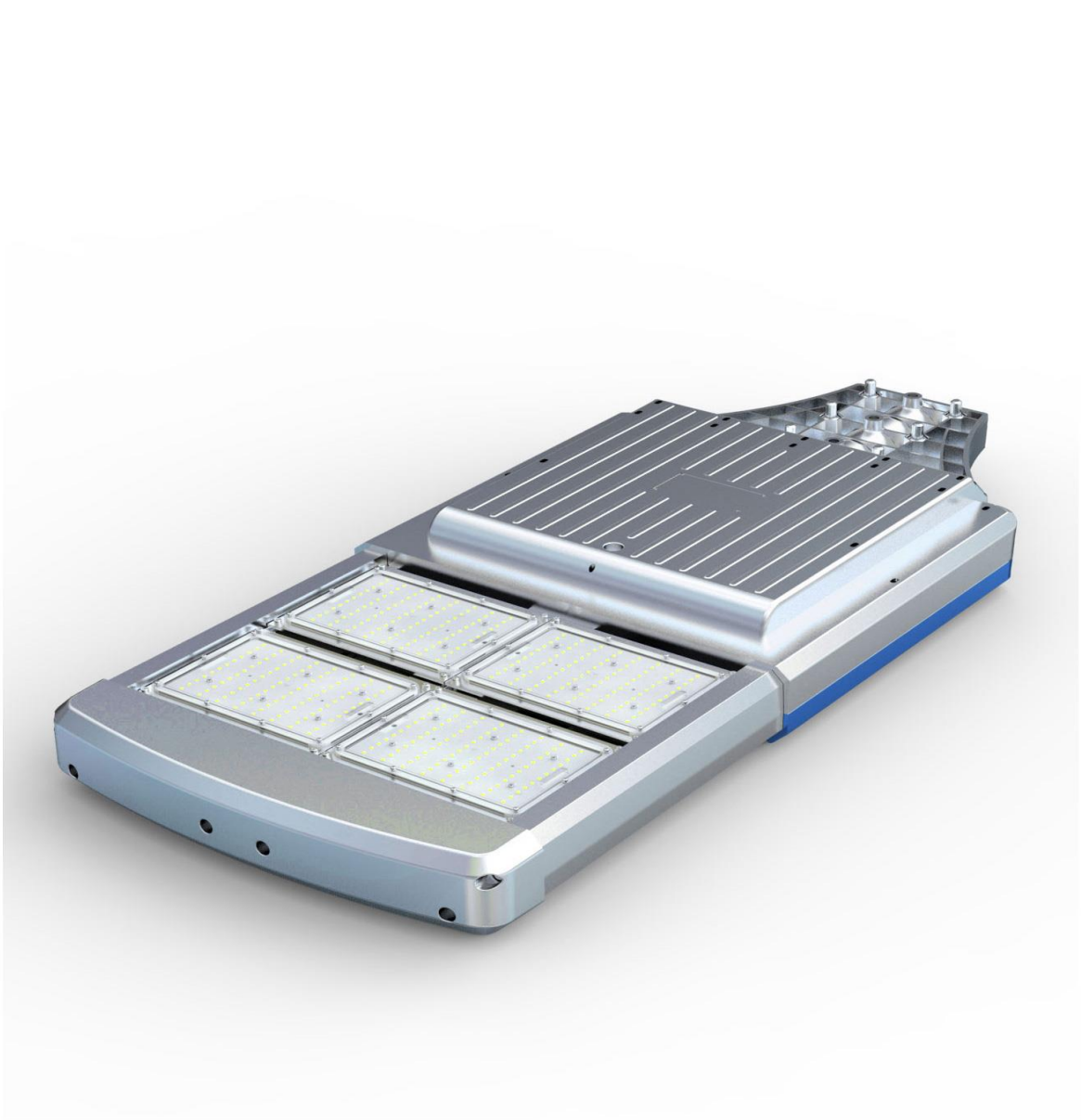


[www.usaemergencysolarenergy.com](http://www.usaemergencysolarenergy.com)  
PH+1-303-634-2208  
Fax: +1-303-634-2208 Email:  
[sales@usaemergencysolarenergy.com](mailto:sales@usaemergencysolarenergy.com)





[www.usaemergencysolarenergy.com](http://www.usaemergencysolarenergy.com)  
PH+1-303-634-2208  
Fax: +1-303-634-2208 Email:  
[sales@usaemergencysolarenergy.com](mailto:sales@usaemergencysolarenergy.com)



[www.usaemergencysolarenergy.com](http://www.usaemergencysolarenergy.com)  
PH+1-303-634-2208  
Fax: +1-303-634-2208 Email:  
[sales@usaemergencysolarenergy.com](mailto:sales@usaemergencysolarenergy.com)

- **PRODUCTS DETAIL**

- 

Main Features:

- 1.Design: Solar panel, Battery, LED panel are all in One Integrated Design
- 2.Solar panel: High efficiency Glass Lamination panel
- 3.LED: High quality LED 120 lumen/W
- 4.Battery : A graded Li-ion battery No.18650
- 5.Lighting distribution: 2 times professional road lighting output
- 6.Waterproof: IP65

Material : Aluminum Alloy + Tempered Glass

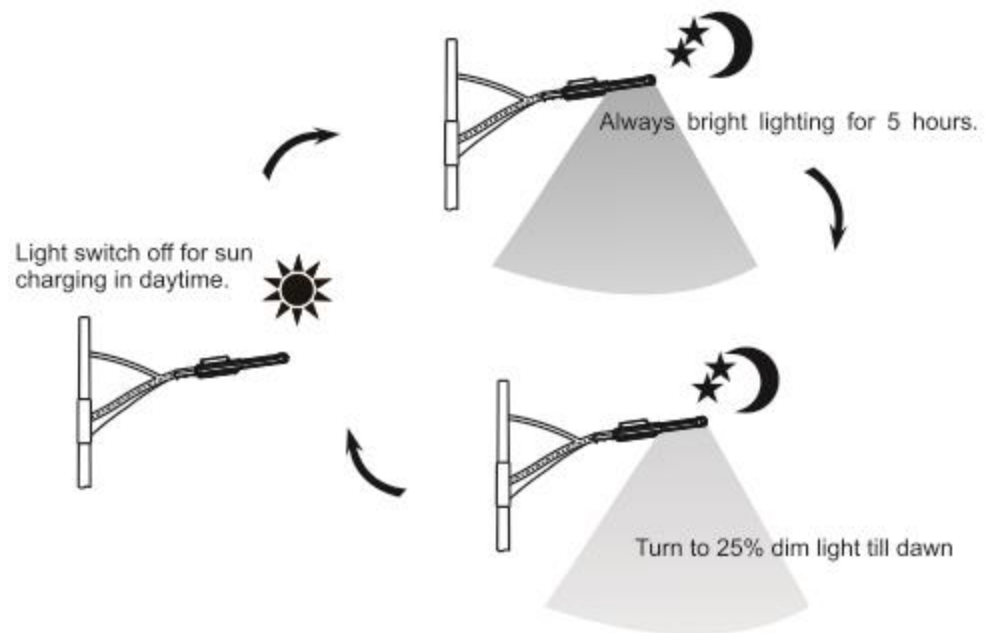
[www.usaemergencysolarenergy.com](http://www.usaemergencysolarenergy.com) PH+1-303-634-2208

Fax: +1-303-634-2208 Email: [sales@usaemergencysolarenergy.com](mailto:sales@usaemergencysolarenergy.com)



## How is the light working?

- 1.Solar charging time: about 10Hrs by bright sunlight.
- 2.Auto off for sun charging in daytime, auto turn on light at night.
- 3.Lighting time: around 3 nights!
- 4.Energy saving, auto turn off in daytime and auto turn on at night, 5 hours always bright light, then turn to 25% dim light till dawn.



[www.usaemergencysolarenergy.com](http://www.usaemergencysolarenergy.com)  
PH+1-303-634-2208 Fax: +1-303-634-2208  
Email: [sales@usaemergencysolarenergy.com](mailto:sales@usaemergencysolarenergy.com)